

Maternal and Child Health Community Engagement and Support

Lisa Asare, MPH

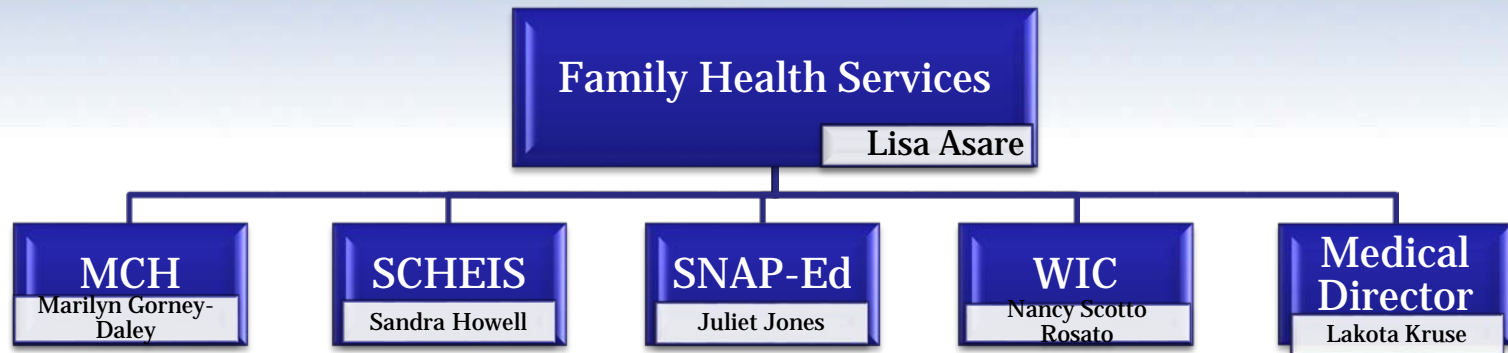
Assistant Commissioner, Division of Family Health Services

New Jersey Department of Health

May 11, 2020



Organizational Structure



Maternal and Child Health Supports NJ Family Health Line 1-800-328-3838

- **Reproductive and Perinatal Health Services**
 - Healthy Women Healthy Families Initiative
 - Sudden Infant Death Syndrome Prevention Program
 - 24/7 hotline: **1-800-545-7437**
 - <https://rwjms.rutgers.edu/departments/pediatrics/divisions/sids-center/about-the-center/overview.xml>
 - Family Health Line **1-800-328-3838**

Pregnancy and COVID-19 Response

- **FAQs – how COVID-19 can impact pregnancy, childbirth and breastfeeding can be found at:**

<https://www.cdc.gov/coronavirus/2019-ncov/need-extraprecautions/pregnancybreastfeeding.html>

- **New Jersey hospitals allow one support person to be with a woman during labor, delivery and after birth. This support person can be a spouse, partner, doula, friend, or family member. Contact your local hospital to find out how they plan to keep you, your baby, your family and healthcare providers safe.**

[www.nj.gov/health/healthfacilities/documents/CN/guidance/Labor and DeliverySupportCOVID19.pdf](http://www.nj.gov/health/healthfacilities/documents/CN/guidance/Labor%20and%20DeliverySupportCOVID19.pdf)

Doulas

- **Doulas provide support during pregnancy, labor, delivery and after birth.**
- **Hospitals have policies to protect doulas and the women they serve from COVID19. Doulas who are unable to attend the birth at the hospital can still provide support by telephone and video communication.**
- **Information about NJDOH pilot doula programs and other MCH programs that support maternal depression and other health issues may be obtained by calling the 24/7
NJ Family Health Line at 1-800-328-3838.**

Home Visiting and Central Intake

- Home visitors continue to serve pregnant women and families in New Jersey through telephone and video communication.
- This includes the following programs: Parent as Teachers (PAT), Nurse-Family Partnership (NFP), Healthy Families Program (HF), TANF Initiative for Parents (TIP) Program.
- To receive support services and join the Home Visiting program, please contact your county Central Intake Hub by visiting the website <https://www.nj.gov/health/fhs/maternalchild/outcomes/> or by calling **NJ-211 (Dial 2-1-1 or 1-877-652-1148)**.

WIC

www.nj.gov/health/fhs/wic

- **WIC is Open**
- **WIC has remote access**
- **Establishment of NJ WIC Participant Portal**
<https://wic.nj.gov/ParticipantPortal/>.
- **Establishment of an emergency proxy**
- **Expansion of NJ WIC Food Choices**
- **NJ WIC continues to monitor supply chain issues**
- **NJ WIC products cannot be limited by WIC vendors**
- **The Commodity Supplemental Food Program (CSFP) has modified operations to include remote certification, proxy pickup and time extensions**
- **WIC Farmers Market Nutrition Program and Senior Farmers Market Nutrition Program will start in June 2020 with modifications and checks by mail.**
- **Call the Family Health Line at 1-800-328-3838 or visit our website at <https://www.nj.gov/health/fhs/wic/participants/find-wic/> to find a WIC agency close to you.**

SNAP & COVID-19

- **NJ Department of Human Services administers NJ SNAP and provides money directly to families for food support;**
- **NJDHS has distributed an additional \$106 million in SNAP benefits;**
- **NJHS is ensuring that those whose benefits were up for renewal in March and April or are due in May or June will be extended for 6 months – so no one’s benefits will be terminated for not completing a renewal;**
- **Interview and hard copy signatures have been waived from the application process in support of social distancing;**
- **Please visit njhelps.org to learn more and apply**

Early Intervention Services

Great News for Families!



Thank you for referring infants/toddlers and their families to the NJ Early Intervention System (NJEIS).

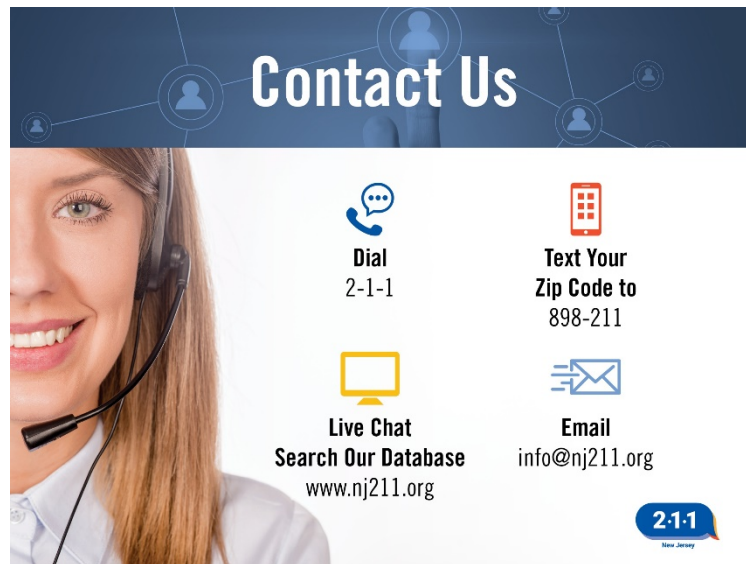
We continue to offer services and supports to families and their children birth to age three with developmental delays or disabilities via **Telehealth**.

Please continue to make referrals or encourage families to call our **toll-free line 888-653-4463**


- All referrals are completed via telephone by trained service coordinators
- We are now using Telehealth to complete developmental evaluations
- Eligible children and their families will receive ongoing Telehealth NJEIS services and supports


Additional Needs and Supports

- **Family Health Line operates 24/7 at 1-800-328-3838**
 - Provides statewide referrals to maternal/child family health services
- **2-1-1 operational 24/7 for information and referrals**




Contact Us


Dial
2-1-1


Text Your Zip Code to
898-211


Live Chat
Search Our Database
www.nj211.org


Email
info@nj211.org

