



RUTGERS

Robert Wood Johnson
Medical School



Addiction and Substance Abuse Resource Guide *Greater New Brunswick and Middlesex County*

Counseling & Treatment Centers

Catholic Charities Diocese of Metuchen Addiction Services

Provides comprehensive alcohol/drug assessments; individual, group and family counseling on an outpatient basis to individuals and families impacted by drugs or alcohol; The program also provides written court evaluations.

Additional Languages: LL, ES

Access Center Phone: 732-324-8200

Website: <https://ccdom.org/middlesex-addiction-services>

Center for Great Expectations Roots to Recovery Outpatient Services

Personalized care for adults struggling with substance use, including psychiatric care, medication management, family services, parenting education, relapse prevention skills, HIV and Hepatitis C testing, group counseling, and individual therapy.

Phone: 732-993-6403

Website: <https://www.cge-nj.org/programs/roots-to-recovery-outpatient/>

Hackensack Meridian Carrier Clinic

Psychiatric and substance abuse addiction treatment and expert care and education for adolescents, adults and older adults on the inpatient and residential levels.

Additional Languages: LL

Phone Number: 800-933-3579

Website: <https://carrierclinic.org/>

Hackensack Meridian JFK Medical Center – Center for Behavioral Health

Outpatient services for individuals with substance use/abuse or mental health problems.

Additional Languages: ES

Phone: 732-321-7189

Website: <https://www.jfkmc.org/clinical-services/behavioral-health>

George J. Otlowski, Sr. Center for Mental Health Care

Offers treatment for a range of emotional disorders, including anxiety, depression, marital, family, and other problems of daily living. The center serves Middlesex County residents ages 5 and older.

Additional Languages: ES

Phone: 732-442-1666

Website:

<http://www.middlesexcountynj.gov/Government/Departments/CS/Pages/GOCMH/George-J.-Otlowski,-Sr.-Center-for-Mental-Health-Care.aspx>

New Brunswick Counseling Center

The Outpatient Substance Use and Co-Occurring Disorders programs offer multiple services for treatment of non-opiate substance use disorders.

Additional Languages: ES

Phone: 732-246-4025

Website: www.newbrunswickcounselingcenter.org/

New Hope Foundation Inc. – Open Door Outpatient Services

Provides services for substance use, gambling and co-occurring mental health disorders, at its New Brunswick facility. Services include drug screening, assessment and referral, aftercare, individual, group and family counseling, drug-free workplace consultation and prevention, and education. Residential services available at other locations.

Additional Languages: ES

Phone: 800-705-HOPE (4673)

Website: <https://newhopeibhc.org/about/facilities/>

Rutgers University Behavioral Health Care (UBHC)

UBHC provides clinical care and the development of new treatments, and it also trains professionals across the country in the best ways to support people through difficult times.

Additional Languages: LL

Phone: 800-969-5300

Website: <https://ubhc.rutgers.edu/>

IN CASE OF EMERGENCY PHONE: 911

Referral Resources

NJ211

NJ 211 is a free, confidential information and referral service for individuals and families needing assistance and helps connect people to resources such as day care facilities, shelters, affordable housing units, social services, employment training programs, senior services, and medical insurance.

Additional Languages: LL

Phone: 211

Website: <https://www.nj211.org>

Family Connection Central Intake

Family Connections Central Intake connects women and families to resources and services such as smoking and addiction services, behavioral health, transportation, housing, health insurance, childcare, early childhood services, parenting education and support, WIC, and nutrition.

Additional Languages: ES

Phone: 888-551-6217

Website: <https://www.cjfhc.org/index.php/en/programs-services/community-programs-and-services>

NJ Children's System of Care Administered by PerformCare

Register, authorize, and coordinate services for children, youth, and young adults who are experiencing emotional and behavioral challenges, are impacted by substance use treatment needs, or have an intellectual/developmental disability.

Additional Languages: ES and others as pdf files

Phone: 877-652-7624

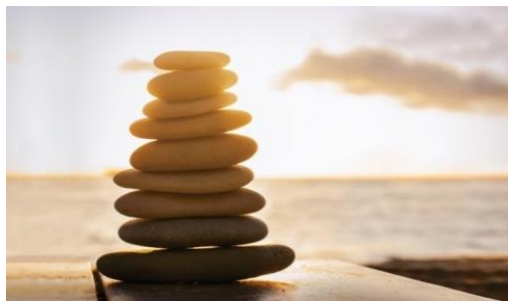
<http://www.performcarenj.org/>

Language Directory:

ES = Spanish

LL = Language Line

For more information on the resources listed, please see the *Behavioral Health Referral and Resource Guide: Greater New Brunswick and Middlesex County, 2019 Edition* at: <http://rwjms.rutgers.edu/BehavioralHealthGuide/>



Help Lines and Other Resources

Wellspring Center for Prevention

Provides prevention, education, information, and referral services. Wellspring offers classroom and e-learning professional development courses for addiction counselors, prevention specialists, and school faculty and staff. All courses are approved for initial or renewal credits towards multiple state and national credentials.

Additional Languages: ES

Phone: 732-254-3344

Website: www.WellspringPrevention.org/

New Jersey Addiction Services Help Line

Provides information and referral to substance abuse treatment agencies statewide. This free service is available 24 hours a day, seven days a week, and all information shared is confidential.

Additional Languages: LL

Phone Number: 844-REACHNJ (844-732-2465)

Treatment Directory Website:

<https://njsams.rutgers.edu/TreatmentDirectory/>