

LIGHT Newborn Nursery Algorithm

Obtain Total Serum Bilirubin (TSB)

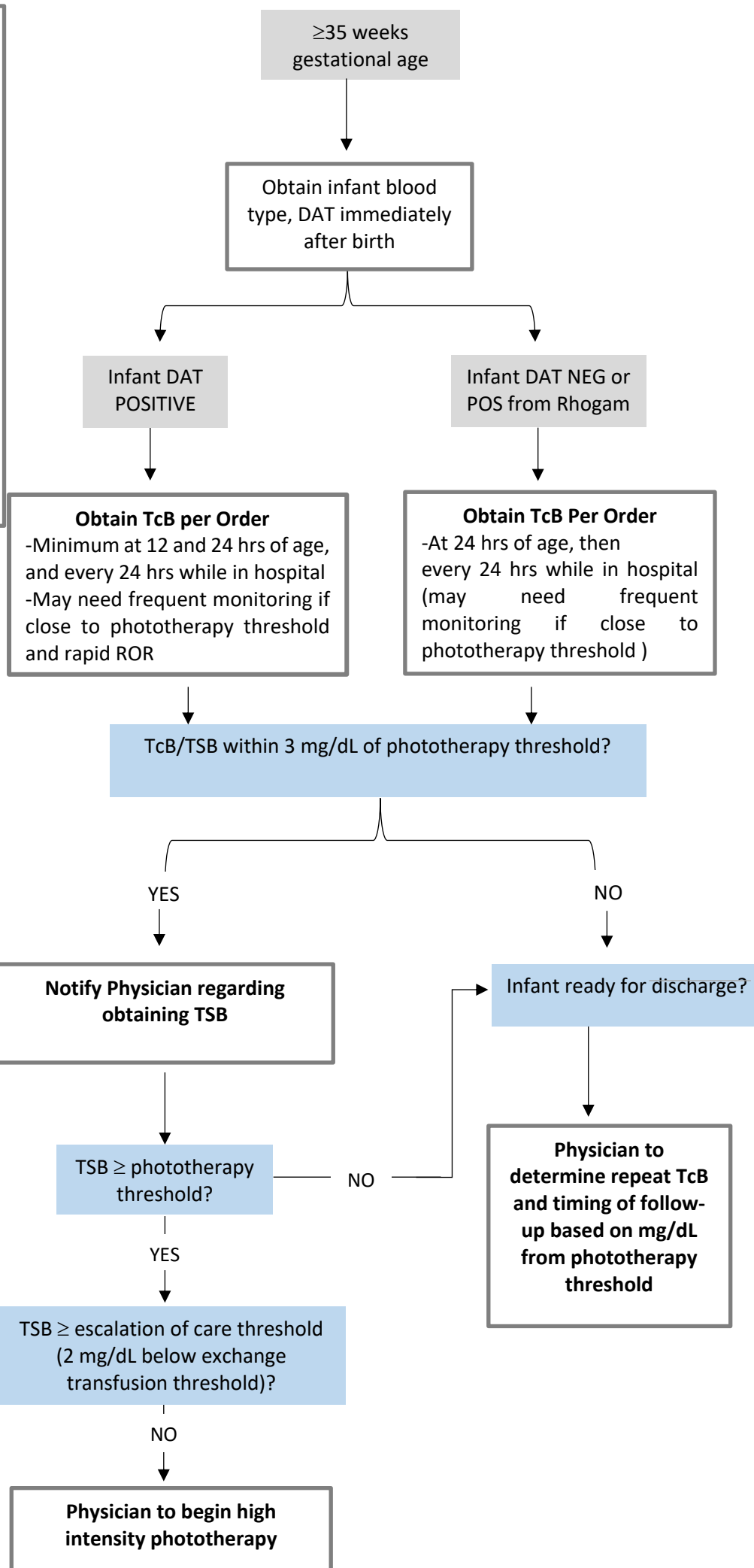
- If transcutaneous bilirubin (TcB) is within 3 mg/dL of or exceeds phototherapy threshold
- If TcB is ≥ 15 mg/dL

Rapid Rate of Rise (ROR)

- TcB/TSB increase ≥ 0.3 mg/dL/hr in 1st 24 hrs after birth or ≥ 0.2 mg/dL/hr thereafter
- Could indicate hemolysis

Phototherapy Thresholds

- Based on absence/presence of neurotoxicity risk factors *other than gestational age* (hemolytic disease, sepsis, significant clinical instability in previous 24 hrs, albumin < 3.0 g/dL)



This algorithm was developed for the VIP Pediatric Acute Care Quality Network project LIGHT. Content may differ from the AAP 2022 Clinical Practice Guideline. Adapted from the algorithm by Dr. K Widmer at Children's Hospital Colorado. Users are encouraged to confirm and supplement the content presented. LIGHT leadership is not responsible for any errors or omissions or for the results obtained from the use of this content.