

RUTGERS

Robert Wood Johnson
Medical School

RUTGERS HEALTH

RWJBarnabas
HEALTH



***Emergency Clinical
Ultrasound Fellowship
2024-2025***

Fellowship Description

- ▶ A one year program designed to solidify basic ultrasound skills and develop expertise in advanced ultrasound applications. Heavy emphasis placed on administration and education.

Why Train Here?

- ✓ Flagship hospital and Academic headquarters of 13 hospital system (RWJBH)
- ✓ High Volume Level 1 Trauma center caring for both penetrating + blunt trauma patients
- ✓ Attached Cancer Institute of NJ. New 12 story cancer hospital being built
- ✓ Support from all specialities available 24/7
- ✓ Ultrasound division well established within hospital and defined credentialing + billing pathway
- ✓ 10 Ultrasound machines in the department which all send video and still images wirelessly to web - based archival system. *Adult ED:* GE Venue x 5. Mindray TE X x 3. *Pediatrics:* GE Venue x 1. *Observation Unit:* Sonosite Xporte x 1.
- ✓ Wireless middleware image archive (Qpath -> Butterfly migration in process) with 13 years of data. Linked to medical record (Epic) enabling consultants to read POCUS reports.

Benefits

Work 0.5 Full Time Equivalent (FTE) Clinically
64 clinical hours/month. ~1 weekend on average
Salary ~137,000 * <small>* Overtime Extra</small>
Travel for Tristate, NJ ACEP, RWJ/Barnabas EM Conference, National ACEP & AIUM or SAEM conferences
Medical License, DEA, CDS, Hospital dues paid
ACEP, SAEM dues paid
Access to Core Ultrasound, ACEP Peercert+ Advanced Ultrasound
iPhone for year for clinical use/shifts

Fellowship Description

Accreditation



We are accredited through the
Emergency Ultrasound Fellowship Accreditation Council

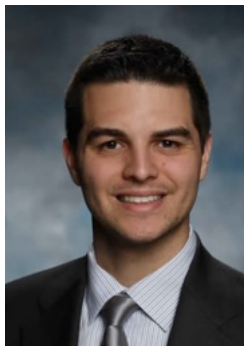
Curriculum

- Weekly QA sessions with fellowship director (typically Wednesday afternoons)
- Participate in weekly didactics (collaborative with other departments)
- Complete monthly ultrasound question assignments
- Attend ultrasound related administrative meetings (1-2 monthly)
- Lecture to residents in conference (at least 4 per year)
- Aid in Ultrasound related resident sim sessions (~4 per year)
- Perform Weekly scan shifts:
 - Must perform 20 scan shift hours monthly, obtain 1000+ scans during fellowship
 - Fellowship director and/or division faculty supervision
- External Rotations in:
 - Advanced Cardiac Imaging Lab - Dept. of Cardiology (~1-2 weeks)
 - Transesophageal Echo - Cardiac Anesthesia (~2 weeks)
 - MSK/Nerve - Sports Medicine (~1 week)
- Participate in National ACEP/SAEM Virtual Ultrasound Journal Club (monthly) and local - systemwide Ultrasound Journal club
- Provide oversight over resident ultrasound rotation and student ultrasound elective
- Assist in Local/Regional Courses. Fellow teaches at:
 - RWJBarnabas Health Intern US Boot Camp
 - RWJBarnabas Health POCUS course in Atlantic City
 - Hospital APP Ultrasound Course
- Perform 1/2 part of ultrasound QA review during second half of fellowship with faculty supervision and direct feedback.
- Submit research project to IRB with goal of publication/presentation at scientific meeting

Ultrasound Division

The ultrasound division is very active within the medical school and collaborates with multiple other departments. It hosts a busy ultrasound rotation for EM residents, popular elective for 4th year medical students as well as an ultrasound interest group within the medical school.

US Fellowship Trained Faculty



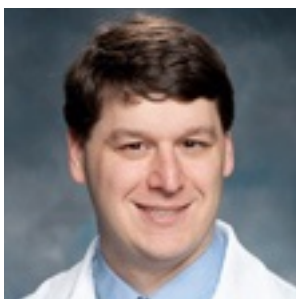
Chris Bryczkowski, MD FACEP



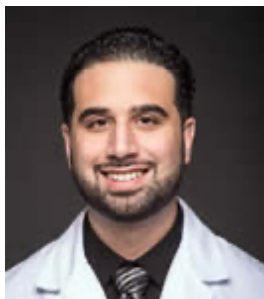
Amanda Esposito, MD FACEP



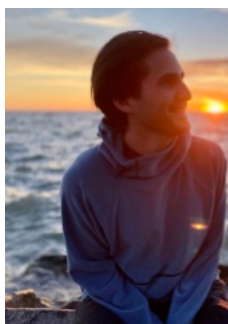
Kaylah Maloney, MD



Daniel Morrison, MD FACEP



Michael Mirza, MD FACEP



Current Fellow:

Matt Tobias MD

Undergraduate: University of Arizona

Graduate: Drexel University College of Medicine

Residency: Robert Wood Johnson Medical School

Email: mt1067@rwjms.rutgers.edu

LEARN ABOUT

Rutgers Robert Wood Johnson Medical School

As one of the nation's leading comprehensive medical schools, Rutgers - Robert Wood Johnson Medical School (RWJMS) is dedicated to the pursuit of excellence in education, research, healthcare delivery and the promotion of community health.

RWJMS encompasses 20 basic science and clinical departments, and hosts centers and institutes including The Cardiovascular Institute, the Child Health Institute of New Jersey, the Center for Advanced Biotechnology and Medicine, the Environmental and Occupational Health Sciences Institute, and the Stem Cell Institute of New Jersey. The medical school maintains educational programs at the undergraduate, graduate, and postgraduate levels for more than 1,500 students on its campuses in New Brunswick and Piscataway, and provides continuing education courses for health care professionals and community education programs. Starting in 2028, RWJMS will integrate with New Jersey Medical School into Rutgers Medical School.



Robert Wood Johnson University Hospital



With its central location in New Brunswick, NJ, Robert Wood Johnson University Hospital (RWJUH) is a leader in the provision of Emergency Care to the residents of central New Jersey. RWJUH is a Level 1 Trauma Center as well as the main academic medical center and provider of tertiary and quaternary healthcare services in central New Jersey. Founded in 1884, it has evolved into a 965 bed, 2 campus facility that physicians from every speciality are affiliated with. RWJUH has been ranked among U.S. News and World Report's "America's Best Hospitals" 7 times. The American College of Surgeons' Commission on Cancer rated RWJUH among the nation's best cancer centers. RWJUH is also a recipient of the Magnet Award for Nursing Excellence.

OUR FACILITIES

Department of Emergency Medicine



- Department fully renovated in 2019
- Home to a 9 resident per year, 3 year, allopathic EM residency training program.
- Department also staffed with PAs/NPs
- ED has 3 main areas (Care Initiation / fast track, Trauma, and Main)
- 35 Bed Rapid Decision Observation Unit
- Full Time Scribe Coverage
- Rotating Medical Students - Mandatory 3rd year clerkship
- On-Line EMS control

Our Community

New Brunswick, New Jersey is a vibrant city of 57,000 residents, a number that triples during the business day with college students, corporate and business employees, hospital and healthcare workers and visitors. It is a community with richly diverse neighborhoods, a bustling downtown, and an innovative and popular cultural arts center. Within a few city blocks converge Johnson &



Johnson's world headquarters, Rutgers-The State University of New Jersey, Robert Wood Johnson Medical School/Hospital, three superb professional theaters, and multiple restaurants. No matter what palate of food you crave: American, Korean, Caribbean, Indian, Ethiopian, Middle Eastern, Tex-Mex, Soul or Creole - we have it all.



Founded in 1766, Rutgers is the 8th oldest college in the nation and is the birthplace of college football. Rutgers is a member of the *Association of American Universities*, a highly selective organization comprising the top 62 research universities in North America. The U.S. News & World Report rated Rutgers as having the most diverse campus in the nation. As part of the Big 10 conference, top level college football games are played minutes from the hospital

Our Location



New Brunswick is an easy destination to reach. The train station, located one block from the medical school and hospital, provides access to Amtrak and NJ Transit. A quick 40 minute train ride puts you at the heart of New York City, Penn Station.

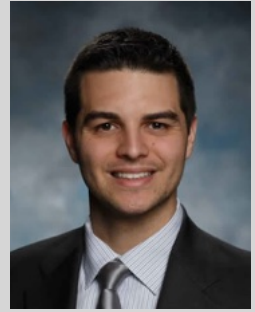


The state of New Jersey is fortunate to have 131 miles of coastline on the Atlantic Ocean, with sandy beaches being only a 45 minute drive from New Brunswick. Atlantic City is a mere 90 minutes away and offers relaxation and nighttime entertainment very few places can parallel.

Contact Us

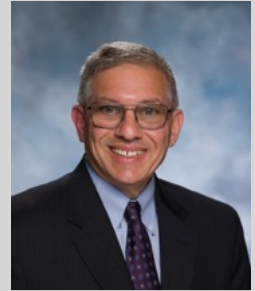
Christopher Bryczkowski, MD FACEP

Associate Professor
Chief, Division of Emergency Ultrasound
Director, Emergency Ultrasound Fellowship
Department of Emergency Medicine
Rutgers, Robert Wood Johnson Medical School
chris.bryczkowski@rutgers.edu



Robert Eisenstein, MD FACEP

Associate Professor
Chairman, Department of Emergency Medicine
Rutgers, Robert Wood Johnson Medical School
Chief, Ambulatory Service
Robert Wood Johnson University Hospital
robert.eisenstein@rutgers.edu



Apply online at: www.EUSFellowships.com

Rutgers Robert Wood Johnson Medical School

One Robert Wood Johnson Place MEB 284B
New Brunswick, NJ 08901-0019
Tel. 732-235-4296 Fax 732-235-6434

Fellowship Coordinator: Nirali Kelly
Email: nirali.kelly@rwjms.rutgers.edu



For information:

[https://rwjms.rutgers.edu/departments/emergency-medicine/clinical-programs/
other/emergency-ultrasound/fellowship-details](https://rwjms.rutgers.edu/departments/emergency-medicine/clinical-programs/other/emergency-ultrasound/fellowship-details)